



# COMPANY PROFILE

2025

## **PT. JAYA ENERGI SOLUSINDO**

**Your Business Solution**

Specialized in electrical field such as generators, ATS & AMF panel, synchron panel, transformer, LV panel or cubicle MV, also supply equipment and tools for power plants.



**JAYA ENERGI**  
SOLUSINDO

## Head Office



Jl. Karang Sari No.5c,  
Rejowinangun, Kotagede  
Yogyakarta, DIY  
55171

## Branch Office



Jl. Boulevard Grand Depok  
City, Cluster Lantana Blok A  
No. 15  
Depok, Jawa Barat

## Quick Response



+62 823-2564-6583

Authorized Partner of

# SCIYON

*Nanjing Sciyon Wisdom Technology Group Co., Ltd.*



## Connect with Us



[jayaenergi.com](http://jayaenergi.com)



[info@jayaenergi.com](mailto:info@jayaenergi.com)



PT. Jaya Energi Solusindo



[jayaenergisolusindo](https://www.instagram.com/jayaenergisolusindo)



Jaya Energi Solusindo



[@jayaenergisolusindo](https://www.tiktok.com/@jayaenergisolusindo)

# Table of Contents

Tentang Kami <i>About Us</i>	4
Visi dan Misi <i>Vision and Mission</i>	7
Klasifikasi Usaha <i>Business Classification</i>	8
Servis <i>Our Services</i>	9
Ruang Lingkup Pasar <i>Our Scope Market</i>	11
Target Pasar <i>Our Market Target</i>	12
Tim Kami <i>Our Team</i>	13
Klien Kami <i>Our Clients</i>	14
Pengalaman Proyek <i>Project Experience</i>	15

# TENTANG KAMI

---

## ABOUT US

PT. Jaya Energi Solusindo spesialis di bidang kelistrikan, mulai dari genset, panel ATS dan AMF, panel Synchron, trafo, panel LV maupun cubicle MV, serta menyediakan peralatan di pembangkit listrik.

PT. Jaya Energi Solusindo is specialized in electrical field such as generators, ATS & AMF panel, synchron panel, transformer, LV panel or cubicle MV, also supply equipment and tools for power plants.





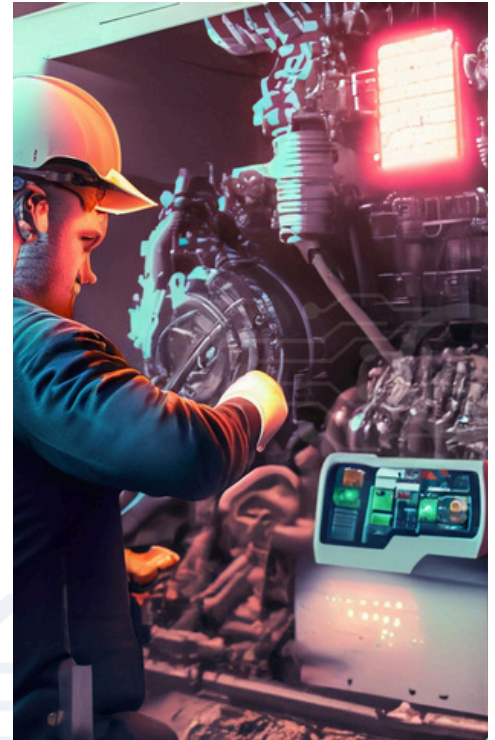
**Kami menyediakan layanan konsultasi yang komprehensif untuk melayani kebutuhan klien yang spesifik dengan menggunakan pengetahuan luas mengenai investasi real estate.**

**Layanan fasilitas komprehensif yang kami berikan meliputi pelayanan teknis, operasional, serta pemeliharaan.**

**We provide a comprehensive range of advisory services to cater the specific needs of our clients using our extensive knowledge of real estate investment.**

**The comprehensive facility services we provide include the technical, operational, and maintenance services.**

Pembangkit listrik membutuhkan berbagai peralatan industri di dalamnya, untuk memenuhi kebutuhan klien, kami menyediakan segala peralatan yang dibutuhkan. Peralatan-peralatan tersebut dapat meliputi genset, trafo, motor pump, panel listrik dengan tegangan rendah hingga tinggi, bank capacitor, sistem keselamatan kebakaran, auto dan remote control, juga remote untuk mesin remote berbasis wight dan nirkabel. Peralatan-peralatan tersebut juga dapat dibutuhkan dalam sektor industri lainnya, seperti industri kilang minyak dan gas, pabrik, gudang, kapal, gedung perkantoran, gedung kota, gedung hotel, fasilitas umum, dll. Sehingga, kami tidak hanya melayani kebutuhan di pembangkit listrik, namun juga kebutuhan di sektor industri lain.



The power plant industry requires a variety of industrial equipment, to meet the needs of our clients we provide all the equipment needed. These equipment include generator, transformers, motor pump, low to high voltage electric panels, capacitor bank, fire safety systems, auto control as well remote control, also remote for wight and wireless based remote machines. Such equipment can also be needed in other industrial sectors, such as oil and gas refinery industries, factories, warehouse, ships, office buildings, city buildings, hotel buildings, public facilities, etc. Therefore, we not only serve the needs for power plant industry, but also the needs of any other industrial sectors.

# VISI KAMI OUR VISION

Memberikan kualitas layanan yang terpercaya sesuai dengan kebutuhan klien serta menciptakan lapangan kerja yang luas bagi para profesional yang terlatih dan unggul di bidangnya untuk berkontribusi pada masa depan dunia.

Providing trusted quality of service according to the needs of customers and creating wide employment opportunities for trained professionals and excelled in their field to contribute to the future of the world.

# MISI KAMI OUR MISSION



Memberikan pelayanan prima dan kepuasan pelanggan.  
*Provide excellent service and keep customers satisfied.*



Memberikan pelayanan berkualitas, berpengalaman, dan terpercaya.

*Providing quality, experienced, and reliable services.*



Memberikan pelatihan terbaik kepada tim.

*Provides the best training to team.*



Menjadi pemberi dan pembuat solusi untuk keluhan pelanggan.

*Became the solutions maker for customers' complaints.*

# KLASIFIKASI USAHA BUSINESS CLASSIFICATION

Klasifikasi Baku Lapangan Usaha (KBLI) Perusahaan kami mencakup:  
Standard Classification of Indonesian Business Fields of Our  
Company are:

43211 Instalasi Listrik (Pembangunan dan pemasangan,  
pemeliharaan)

35121 Pengoperasian Instalasi Penyediaan Tenaga Listrik

35122 Pengoperasian Instalasi Pemanfaatan Tenaga Listrik

35129 Aktivitas penunjang tenaga listrik lainnya (Konsultasi)

71204 Jasa Inspeksi Teknik Instalasi (Pemeriksaan dan  
Pengujian)

71102 Aktivitas Keinsinyuran dan Konsultasi Teknis YBDI

Perusahaan kami juga sudah tersertifikasi:  
Our company also has been certified of:



ISO 9001:2015  
Quality Management System



ISO 14001:2015  
Environmental Management System



ISO 45001:2018  
Occupational Health & Safety Management System

# SERVIS KAMI OUR SERVICE

## Layanan Perbaikan Mesin

## Engine Repair Service

Layanan perbaikan yang kami sediakan adalah untuk menjaga agar mesin tetap berjalan lancar dengan memperbaiki semua bagian mesin yang rusak.

Our repair services are provided to keep the engine running smoothly by repairing all the damaged parts of the engine.



## Perawatan Mekanis Berkala

## Routine Mechanical Maintenance

Layanan perawatan atau pemeliharaan berkala kami rancang untuk menjaga agar mesin dapat beroperasi dengan aman dan nyaman setiap hari.

Our routine maintenance services are designed to keep the engine operating safely and comfortably every day.



## Instalasi

## Installation

Kami menerima pelayanan instalasi berkualitas tinggi dengan harga yang kompetitif dan tentunya bergaransi resmi. Kami juga melayani kebutuhan instalasi dengan keadaan kompleks sesuai dengan permintaan dan kebutuhan yang akan membantu bisnis pelanggan.

We receive high-quality installation services at competitive prices with an official warranty. We also serve the needs of installations with complex circumstances according to the demands and needs that will enable the customers' businesses.



# **SERVIS KAMI OUR SERVICE**



## **Layanan Kalibrasi dan Pengujian Mesin**

Kami menyediakan layanan kalibrasi untuk berbagai alat pengujian dan mesin industri yang telah terakreditasi oleh Komite Akreditasi Nasional (KAN).

We provide calibration services for a wide range of testing tools and industrial machinery that have been accredited by Komite Akreditasi Nasional (KAN).

## **Engine Calibration and Testing Services**



## **Servis Alat Berat**

Kami menyediakan layanan servis untuk berbagai alat berat seperti Bulldozer, Wheel Loader, Hydraulic Excavator, Crane, and Truck.

We provide services for various heavy equipment i.e. Bulldozer, Wheel Loader, Hydraulic Excavator, Crane, and Truck.

## **Heavy Equipment Service**



## **Layanan Uji Inspeksi dan Konsultasi Pembangkit**

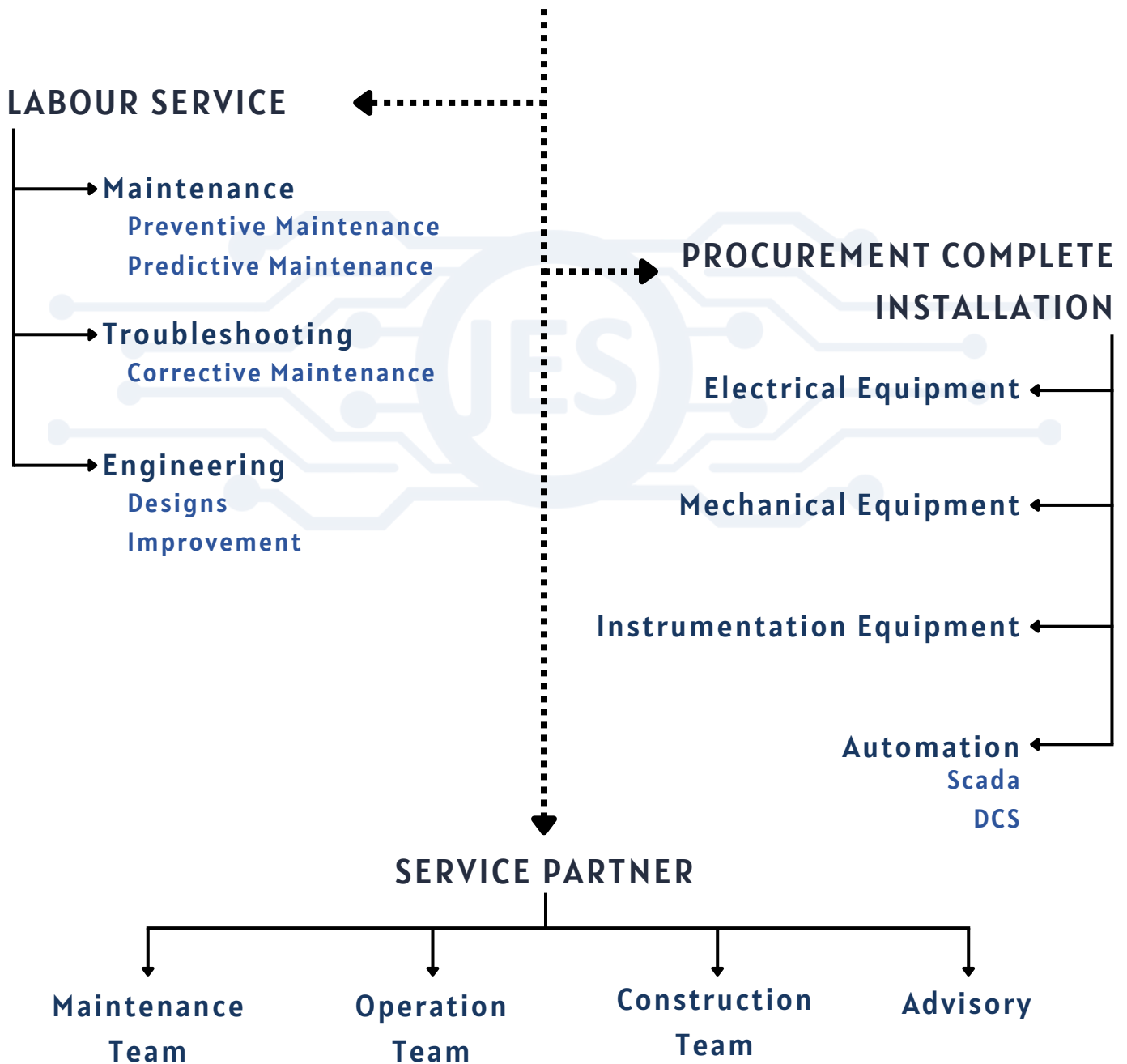
Kami menyediakan layanan uji, inspeksi mesin pembangkit serta konsultasi pembangkit. Perencanaan, pengopasian, perawatan, peningkatan mutu, serta perbaikan.

We provide test services, power plant inspections and consultations. Planning, operation, maintenance, quality improvement and repair.

## **Inspection Test Services and Consultation of Power Plant**

# RUANG LINGKUP PASAR OUR MARKET SCOPE

**PT. JAYA ENERGI SOLUSINDO**



# TARGET PASAR KAMI OUR MARKET TARGET

## SEGMENTASI

## SEGMENTATION

POWER

ELECTRICITY

INSTRUMENTATION

AUTOMATION

Gas Engine/Diesel Engine of Power Plant

Gas Turbine of Power Plant

Steam Turbine of Power Plant

Subtation

Mep Building

Gas Station

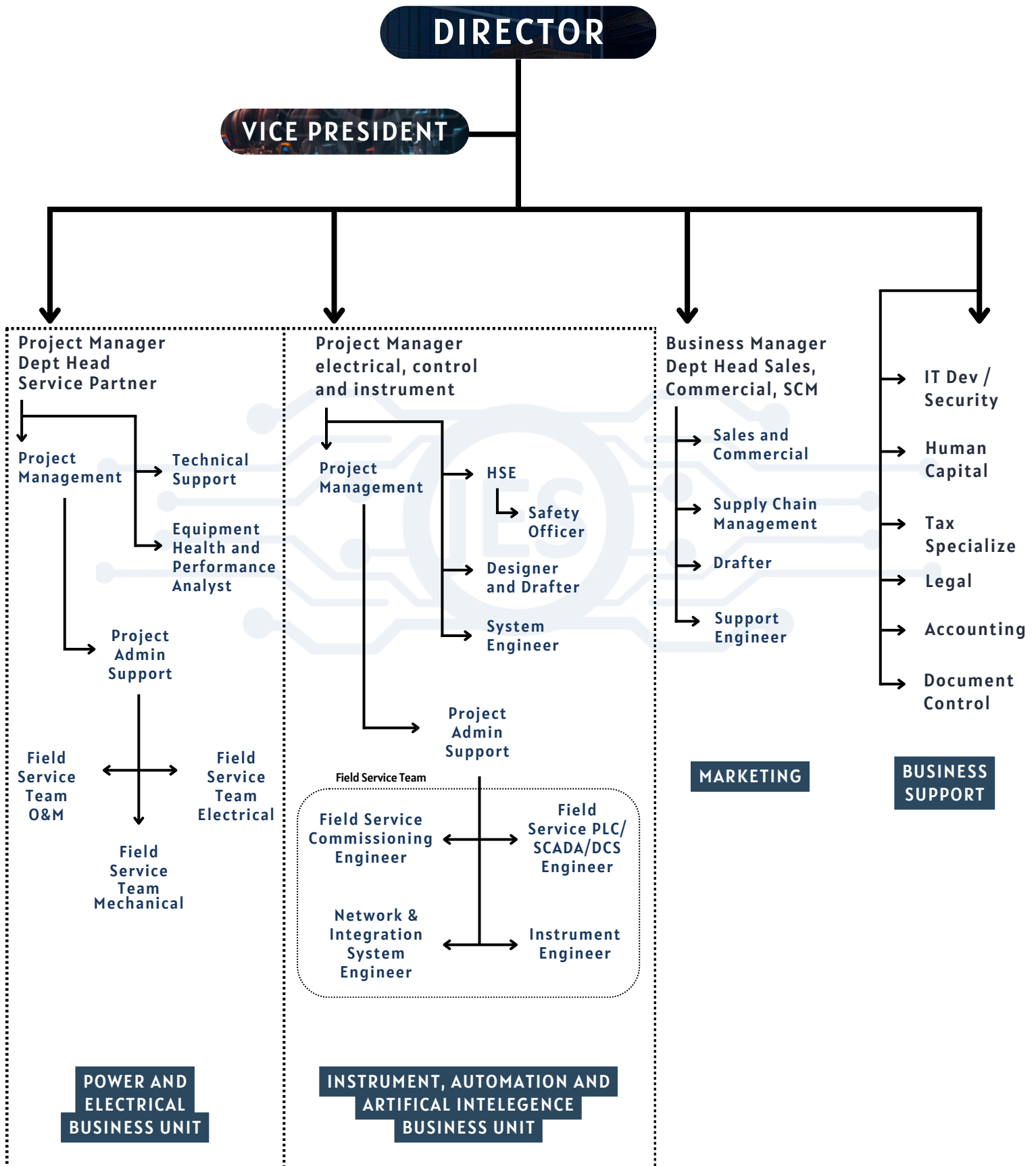
Factory/Warehouse

Process Plant

Mining



# TIM KAMI — OUR TEAM



# KLIEN | OUR KAMI | CLIENTS

Kami selalu memberikan layanan terbaik dan profesional kepada pelanggan kami di seluruh Indonesia.

We always provide the best and professional services to our customers across Indonesia.



# PENGALAMAN PROYEK

# PROJECT EXPERIENCE

## Project Owner:

### PT. Sumberdaya Sewatama

- Repair inverter of dispenser SPBU Shell in multiple site
- Repair the new installation of Grounding System of PLTD
- Repair NGR Panel
- Repair outgoing MV Panel
- Preparation of engine of DEG series 3500
- Preparation of Cubicle MV PLTD
- Installation power cable on Limin Ship
- Demobilization engine 3500 series
- **Quality Assurance Consultancy for Gas Engine Power Plant**
- Gas turbine turning speed control
- Diesel engine turning speed control
- Demobilization at PLTMG Rawa Minyak
- Installation at PLTMG Kotogasib
- etc

### PT. Gasuma Federal Indonesia

- Supervisory Installation of 3 x DEG Caterpillar 3500
- Commissioning of 3 x DEG Caterpillar 3516 + DEG Caterpillar 3520
- Supply Synchroscope Meter DEIF Type CSQ-3 Marine

### PT. Wika Rekayasa Konstruksi

- Supply and installation of Perkins engine series 1130 at PLTMH Sumberjaya

### Awera Resort

- Supply and installation of Perkins generator 800kVA

### Supreme Energy Rantau Dadap

- Overhaul Cummins engine KTA 38

### Valmet Oy.

- Installation and commissioning Pulp Dyer Machine (APRIL Group)
- Installation and commissioning Electrostatic Precipitator at recovery boiler (APRIL Group)

### **Mearest Soputan Mining**

- Installation ME for electric pump on pump in Pit Mining 6.6 kV with VFD
- Installation of 3 x generator diesel of Perkins 2000 kVA

### **Pertamina Power Indonesia**

- Installation and commissioning of 2 x 4.7 MW gas engine generator MWM 11 kVA

### **BECIS**

- Supply auxiliary, BoP, and supporting equipment for Boiler Biomass Plant

### **Texcal Mahato PLTD**

- Overhaul of 9 x generator diesel engine at oil gas site

### **PT. Freeport Indonesia**

- Commissioning of 3 x 5 MW engine diesel of Wartsila series 34

### **PT. PLN / PT. Hutan Alam**

- Consultancy, installation and commissioning at PLTD Bengkalis (7 MW - 20kV)
- Consultancy, installation and commissioning at PLTD Selat Panjang (2 MW - 20kV)
- Operation and maintenance for commissioning periods

### **PT. Indopower Energi Abadi**

- Consultancy, installation and commissioning at PLTD Jeranjang (20 MW - 20 kV)
- Operation and maintenance for commissioning periods

### **PT. Pratama / Nike Factory**

- Trouble shooting governor speed control & commissioning genset CAT 3516

### **PPESDM Cepu**

- Retrofit Generator Control Panel 2000 A

### **PT. Sumatera Global Energi**

- Preventive Maintenance level 5000 hrs genset 4 x 135 kVa Perkins

### **RSUP Dr Johannes Leimena**

- Preventive Maintenance & trouble shooting genset 2x1550 kVa Perkins

### **PT. Ubu Villa Indonesia**

- Troubleshooting Genset
- Supply & Instalasi Battery Charger DSE 9310

### **PT. Cahaya Gemilang Suksindo Bersama**

- Handling, Unloading & Reposition 2 Unit Genset 1000 kVA

### **PT. Voith Hydro Indonesia**

- Troubleshooting Unit Dongfeng Cummins 100 kVa
- Overhaul Motor of 1 Unit Brush Dust Collector and flywheel of brush dust collector assembly

### **Bakpia Jogkem Yogyakarta**

- Preventive Maintenance Generator
- Troubleshooting, Repair & Rewiring Electrical Genset
- Overhaul Generator

### **PT. Kilang Pertamina Internasional - RU VII Kasim**

- Assessment Dan Troubleshooting Diesel Engine Generator Set
- Supply Spare part Diesel Engine Generator Set
- Supply Material Cap Radiator
- Supply Material PM 250 H

### **Betun Selo Pali Energi (BSPE)**

- Rent Generator Set 140 kVA and 250 kVA for 1 Year

### **PT. Mattel Indonesia**

- Rent Generator Set 500 kVA for 24 Months

### **PT. IHI Power Service Indonesia**

- Preventive Maintenance Lv. 2
- Modification / retrofit panel control engine
- Upgrade module control engine

### **Rumah Sakit Umum Antam Medika**

- Troubleshooting Seal Crankshaft - Generator Set MAN D2840 LE211

### **Rumah Sakit Umum Mitra Paramedika**

- Genset Procurement Process and Technical Support Advisory

### **PT. Kilang Pertamina Internasional - RU VII Kasim**

- LTSA PM Diesel Engine Generator (DEG) at PT KPI RU VII Kasim

### **GEPP Koto Gasib 25 MW**

- Installation & Commissioning Gas Engine MWM (2019)

### **Wartsila**

- Installation & Commissioning GEPP Bangkanai 2 (2021)

### **Pertamina Refinery Unit II**

- Installation & Commissioning Scada mesin gas sewa (2022)

### **APRIL Group**

- Installation & Commissioning cutter layboy RAPP (2022)

### **PT. Freeport Indonesia, Portside**

- Upgrade generator controller engine Wartsila 3 x 34 Series

### **PT. Prima Layanan Nasional (PLN) Enjiniring**

- GPRS Installation & Commissioning at GEPP Lombok Peaker
  - Panel Control System Hardwire
  - PLC Programming
  - Develop HMI
  - Scada Integration
  - Installation Instrumentation
  - Calibration Instrumentation
- Fire Alarm Control Panel at GEPP Lombok Peaker
  - Panel Control System Hardwire
  - Safety Relay Software Configuration
  - Calibration Gas Detector

### **Nanjing SCIYON Wisdom Technology Co.Ltd**

- Retrofit Panel Upgrade DCS - DEH -ETS at PLTU Barru, South Sulawesi

### **PT. Agro Raya Mas**

- Fractionation Upgrading PLC and SCADA

# JES



“

The rapid growth of our company is certainly supported by building and maintaining good relationships with our clients in various industries.



**PT. JAYA ENERGI SOLUSINDO**

**Your Trusted Business Partner**

**Your Business Solution**